

# Laptop 4D color Doppler

## Ultrasound Scanner



Made by Grand  
Medical Group

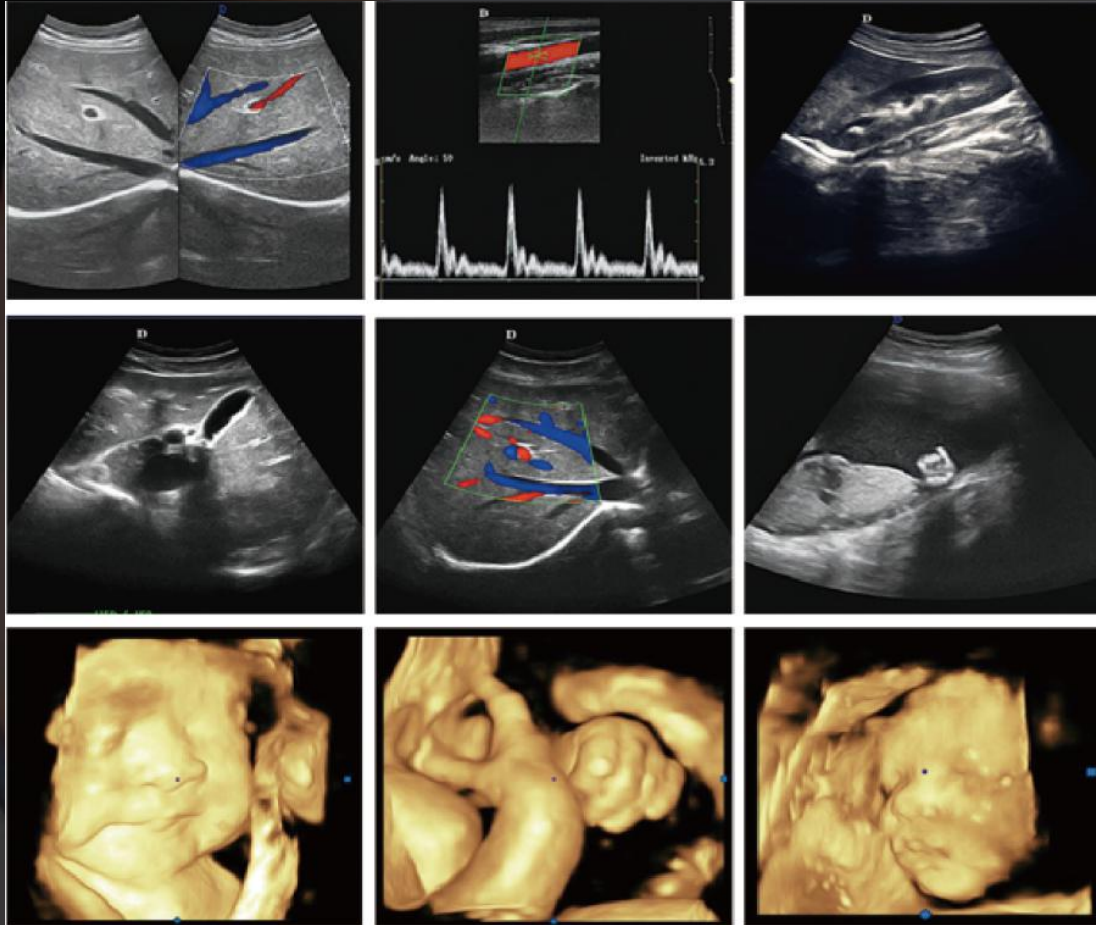


### **GC-P6**

#### **15 inch LED Specialized in Obstetrics & Gynecology**

Every design decision on the ultrasound machine is made with patient and user comfort in mind, reducing stress without compromising diagnostic performance. The ultrasound machine has features designed to help enhance workflow, mobility and convenience.

**Applications: abdominal, urology, OB&GYN (superb 3D/4D performance), paediatrics / neonatal, superficial / small organ, musculoskeletal, cardiology etc.**



- \* 15 inch medical LED display with articulating arm for viewing from any angle
  - \* Ergonomic keyboard design, Elegant operation panel, optimized keyboard according to operation frequency and functional zone, and adjustable
  - \* Probe Ports: 2 Active, free probe switching, hot-swapping available
  - \* Continuously working 2-3 hours: Large capacity plug-gable mobile rechargeable lithium-ion battery with imported high capacity battery
  - \* Digital surround audio system
- Full patient database and image management solutions: DICOM 3.0, AVI/JPG, USB2.0, HDD, DVD, PDF report

## Confidence for Diagnose

Trans-vaginal transducer with high definition displays minute fetus clearly

- \* Quality volume transducer shows vivid fetal facial organs
- \* Distinct fetal aortic arch
- \* Sensitive color Doppler displays plentiful renal blood flow
- \*

Vertebral artery and vein blood flow reflects enough penetration and good spatial resolution

- \* Dedicated software measures carotid automatically and accurately